



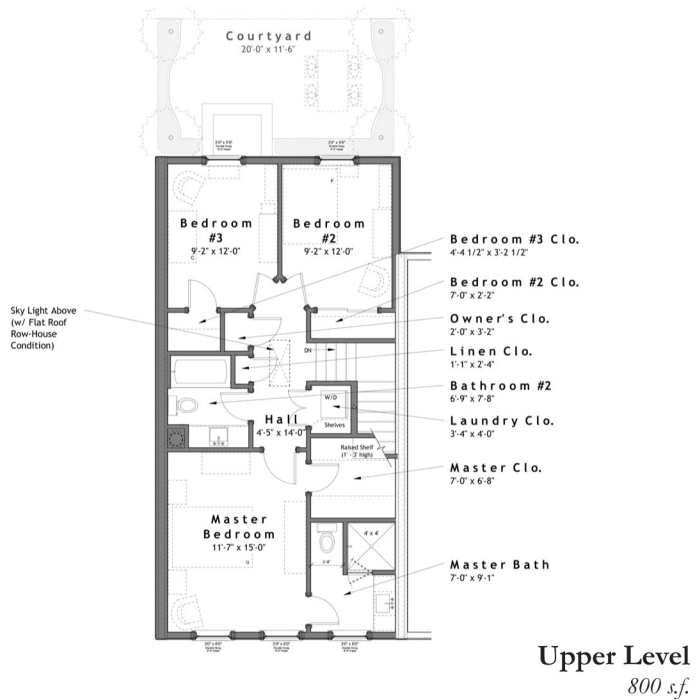
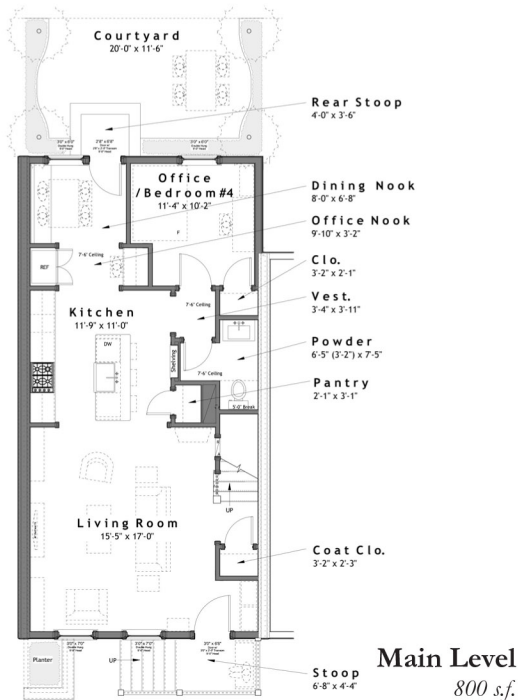
SUMMARY :

Total Area (Conditioned): 1,600 s.f.
Bedrooms: 4
Bathrooms: 3

Width (Overall): 20'- 0" (Party Wall Centerline)
Width (Interior): 19'- 0"
Depth (Overall): 45'- 0" (Including Front Stoop)
Depth (Framing): 40'- 0" (Excluding Stoops)

FEATURES :

- o 10'-0" Ceilings on Main Level, 9'-0" Ceilings on Upper Level
- o Open Main Level Floor Plan, Including Bonus Bedroom/ Office
- o Compact, Efficient Floor Plan
- o Laundry Closet Accessible to Bedrooms
- o Plan Shown as Row House, Attached on Both Sides
- o Highly Customizable
- o Option: Convert to Detached & Add Side Windows



Design modifications and/or alternate elevations may be required if building within the South Main Neighborhood. All dimensions are approximate. The final set of construction documents may vary or include minor modifications.

CRAFT DESIGN STUDIO

3016 SHILOH LANE, CHARLESTON, SC 29414
 704.408.5501 TEL • WWW.CRAFTDESIGN-STUDIO.COM

CDS - 1600